

Inside Mount

Outside Mount

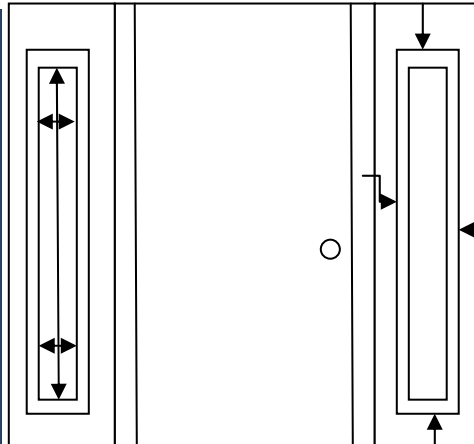
INSIDE/RECESS MOUNT

Width – measure the width of the glass.

Length – measure the length of the glass.

SheerLace Curtain Company will calculate the correct width and length to cover your inside mounted sidelight window.

**1/2 of an inch space is required between the surface of your window glass and the outer edge of your window molding. This allows enough space for a tension rod to press against the vertical edge of the window. All inside mounted sidelight curtains come with a pair of spring tension rods which push against the inside of the molding edge to hold the curtain in place.



OUTSIDE MOUNT

Width – measure from left outside window molding across to right outside window molding.

Length – measure from top of outside window molding to bottom of outside window molding.

SheerLace Curtain Company will calculate the correct width and length to cover your outside mounted sidelight window.

**All outside mounted sidelight curtains come with a pair of sash rods. Magnetic rods and café rods may be ordered separately instead of sash rods for an additional fee.

Return